

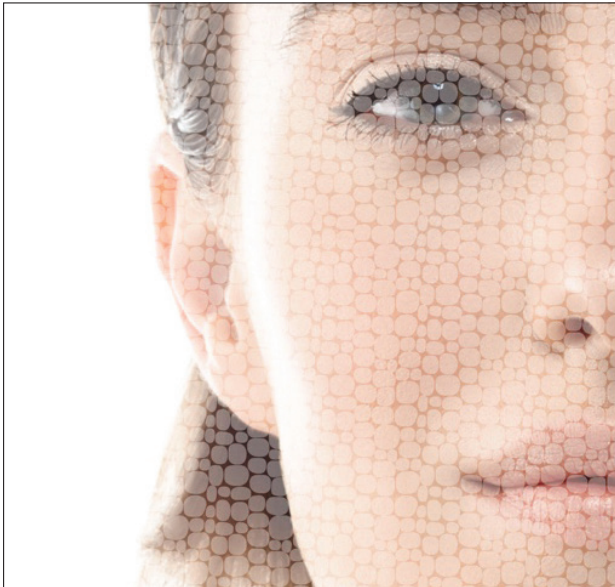
## ADAPTIVE TREATMENT MENU

### TREATMENTS

PRIORI skin services are adapted to all skin concerns, condition and needs, individualized, as no 2 skins are the same on any 2 days.

Following a thorough analysis to decode your skin requirements your PRIORI expert will devise a specialized facial treatment adapted to your needs and desires. All you need to do is choose the length of time you have to spare!

**Point to note:** Sometimes, best results are seen in a course of treatment.



#### PEEL IT - 15 MINUTES

Short on time? Your first-step skin peel for the "TIME CONSCIOUS – RESULTS HUNGRY" client. Designed to analyze the needs of the skin, exfoliate and brighten the complexion and even the appearance of the skin, this quick lunchtime peel is power-packed with multi-layer benefits – even if you only have 15 minutes to spare!

PEEL IT  
**15:00**  
MINUTES

#### PRIORI REVEAL - 30 MINUTES

Experience the wonder of Adaptive Skincare – personalized just for you. For people wanting skin that radiates health! Offering smooth, skin-refining results with a bright, radiant finish. This face treatment incorporates 2 stages of exfoliation with both mechanical scrub and lactic peel pad to diminish your pores, then a customized masque to suit your very needs, this will introduce you to the world of PRIORI Adaptive Skincare and set you on a path to life-long skin health.

PRIORI REVEAL  
**30:00**  
MINUTES

#### SKIN RE-BOOT - 30 MINUTES

Sometimes we all need a "Re-Boot" – yet time is precious. This adaptive facial procedure is designed to do just that - re-boot your skin. Your skin specialist will customize this treatment to your individual needs, leaving your skin brighter, more plump, restored and hydrated – results you can see and feel!

SKIN RE-BOOT  
**30:00**  
MINUTES

#### SKIN UNWRAPPED - 45 MINUTES

*(for customers that have already experienced PRIORI'S advanced Peel systems)*

Unwrap your skin's true potential. If you are an *advanced peel client* you will love the benefits you see with this facial treatment. We will adapt and decode your skin needs, regardless of your skin concerns - this will be the ultimate skin prescription.

SKIN UNWRAPPED  
**45:00**  
MINUTES

#### UNCOVER. EXPOSE. RENEW. - 60 MINUTES

A treatment with the wow factor that provides dramatic and visible results while achieving skin rejuvenation with improved elasticity, texture, tone and clarity. Relax and lose yourself in a wealth of massage plus unique innovative skincare results! Includes a hand and arm peel treatment – you will awake feeling de-stressed, restored with youthful-looking skin. The ultimate indulgence. Your skin. Uncovered.

UNCOVER. EXPOSE.  
RENEW.  
**60:00**  
MINUTES

## PRIORI FACIAL PROTOCOL – Step-By-Step

### “PEEL IT” – 15 Minutes

**Description:** Short on time? Your first-step skin peel for the “TIME CONSCIOUS – RESULTS HUNGRY” client. Designed to analyze the needs of the skin, exfoliate and brighten the complexion and even the appearance of the skin, this quick lunchtime peel is power-packed with multi-layer benefits – even if you only have 15 minutes to spare!

#### SUPPLIES NEEDED

- Large cotton pads and/or gauze pads
- Small cotton rounds for eye cover
- Tissues
- Headband
- Small dish/dauber dish
- Digital timer
- Cotton swabs/glycolic applicators
- Disposable face masque brush
- Hand sterilizing gel
- Bowl of cool, clean water
- Vinyl (not latex) close fitting gloves

#### TREATMENT STEP-BY-STEP

- **ESSENTIAL PRIOR TO EACH TREATMENT:** Complete PRIORI Skin Analysis & Consent Form with client and obtain client signature.
- **REVIEW** Pre-Peel Instructions with client.
- **PRODUCTS NEEDED:** Chosen Cleanser, PRE Peel Gel, Multi-Layer Peel Gel OR Superceutical Peel Gel, DNA Recovery Serum, Barrier Restore Complexe, DNA Intense Recovery Creme, LCA Eye Serum. TETRA Sunscreen and Minerals.  
**NOTE:** Do not use hot water, hot towels or steam during cleansing procedure or removal of peel product.
- **SECURE** client headband in place and sterilize your hands prior to starting the cleanse.
- **PLACE** 2 pairs of close fitting vinyl gloves onto your hands.

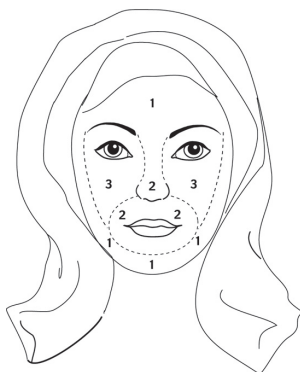
#### CLEAN & PREP – ESSENTIAL STEP 1

1. Mix 2 pumps of chosen PRIORI facial cleanser with small amount of water in hands.
2. Gently and thoroughly cleanse the face & neck.
3. Remove carefully with dampened pads/cotton; blot skin dry.
4. Color match Minerals.
5. Repeat cleanse to remove all traces of make up.
6. Blot dry with tissue.

#### TREAT & CORRECT - ESSENTIAL STEP 2

1. Ask client to keep eyes closed throughout the entire procedure.

2. **OPTIONAL for advanced protocols.** If clients 1st QSOD Peel, do not use Pre Peel Gel only perform double cleanse to monitor client's skin reaction. PRE Peel Gel using a cotton or gauze pad. Wipe lightly and evenly over entire application area, in a methodical sequence.
3. Blot skin with tissue.
4. Apply barrier gel/vaseline to outer corners of eye crease, lips and base of nose and any other areas that should not be exposed to the peel.
5. Apply cotton rounds for eye protection. Cut rounds into half-moon shapes so that the lid is covered but area underneath is exposed.
6. Place 2-3 pumps of chosen Peel Gel into a small dish.
7. Set timer for 3 minutes **MAXIMUM; time may be reduced if needed.**
8. Start timer. Apply Peel Gel: Use disposable masque brush to apply peel in thin layer in sequence shown in diagram. Once even, use glycolic applicators in a counterclockwise motion over the layer of peel, check with client for areas of sensation.
9. If the neck is to be peeled, it may be performed after the facial application is removed.



**IMPORTANT:** Development of localized redness (“hot spots”) is a sign of uneven peel penetration. Check for erythema (redness). If erythema develops, remove peel gel immediately by cleansing the area.

TOTAL MAXIMUM RECOMMENDED EXPOSURE TIME FOR PEEL GEL IS 3 MINUTES.

10. Remove Peel Gel: After 3 minute time limit, thoroughly remove any remaining gel with plenty of moistened cotton or gauze pads following the same sequence used to apply the Peel Gel. Repeat as necessary until all of the peel gel has been removed. Never use the same pads more than once; wipe then throw away, to ensure that all of the peel gel is removed. **Do not use sponges either as the holes collect peel within them.**

REMOVE TOP PAIR OF VINYL GLOVES.

11. Cleanse skin with appropriate facial cleanser; remove carefully and gently with water. Blot skin with tissue.

REMOVE FINAL PAIR OF VINYL GLOVES.

#### FINISH & PROTECT - ESSENTIAL STEP 3

If this is the client's 1st peel, Barrier Restore Complexe should only be used to monitor client skin sensitivity.

- Finish by applying:
  - 2 pumps of DNA Recovery Serum over entire area
  - 1 pump of LCA Eye Serum - if required around eyes - piano finger movements
  - 1 pump of Barrier Restore Complexe OR DNA Recovery Creme over entire area
  - 2 pumps of TETRA fx251 to entire area
  - Minerals to entire area
- Conclude treatment by completing a Skincare Recommendation Chart for client and review Post-Peel Instructions.
- Offer the client a glass of water or herbal tea.

#### RETAIL

- Chosen Facial Cleanser
- Chosen Corrector Serum/Treatment
- Chosen Hydrator
- Chosen Eye Product
- TETRA fx251
- DNA fx221 Recovery Serum
- Minerals & Brushes



#### NOTES:

## PRIORI FACIAL PROTOCOL – Step-By-Step

### (NO PEEL FACIAL) “PRIORI REVEAL” – 30 MINUTES

**Description:** Experience the wonder of Adaptive Skincare – personalized just for you. For people wanting skin that radiates health! Offering smooth, skin-refining results with a bright, radiant finish. This face treatment incorporates 2 stages of exfoliation with both mechanical scrub and lactic peel pad to diminish your pores, then a customized masque to suit your very needs, this will introduce you to the world of PRIORI Adaptive Skincare and set you on a path to life-long skin health.

#### SUPPLIES NEEDED

- Large cotton pads and/or gauze pads
- Small cotton rounds for eye cover
- Tissues
- Headband
- Small dish/dauber dish
- Disposable face masque brush
- Digital timer (if TTC Enzyme Peel+Masque is used)
- Hand sterilizing gel
- Lavender/relaxing eye pillow
- Bowl of cool, clean water
- Vinyl (not latex) close fitting gloves

#### TREATMENT STEP-BY-STEP

- **ESSENTIAL PRIOR TO EACH TREATMENT:** Complete PRIORI Skin Analysis & Consent Form with client and obtain client signature.
- **REVIEW** Pre-Peel Instructions with client.
- **PRODUCTS NEEDED:** Chosen Cleanser (all 3 is ideal), 2xfoliant Peel + Scrub, Smart Peel Pads, Hydrofill Masque, Natural Enzyme Peel & Masque, DNA Recovery Serum, Barrier Restore Complexe OR DNA Intense Recovery Creme OR Skin Restore Creme OR Luxuriant Creme, Chosen Eye Product, TETRA Sunscreen and Minerals.  
**NOTE:** Caution with hot towels and steam when customizing with various peel products.
- **SECURE** client headband in place and sterilize your hands prior to starting the cleanse.
- **PLACE** 2 pairs of close-fitting vinyl gloves onto your hands.

#### CLEAN & PREP – ESSENTIAL STEP 1

1. Mix 2 pumps of chosen PRIORI facial cleanser with small amount of water in hands.
2. Gently and thoroughly cleanse the face & neck.
3. Remove carefully with dampened pads/cotton; blot skin dry.
4. Color match Minerals.
5. Repeat cleanse to remove all traces of make up.
6. Blot dry with tissue.

\*APPLY A SMALL AMOUNT OF LUXURIANT CREME TO LIPS. USE THE MAGNIFYING LAMP TO ANALYZE CLIENT'S SKIN.

7. Mix 1 teaspoon of 2xfoliant Peel+Scrub with 1 pump of Active OR TTC Cleanser and a drop of water together in a small bowl. Apply the mixture gently to the face, neck and décollete, using a circular motion for approximately 1minute (option: gentle steam if a very tolerant skin, with caution).
8. Gently remove the scrub with lukewarm (not hot) mitts to ensure all product is removed.
9. REMOVE TOP PAIR OF VINYL GLOVES.
10. Take 1 pump of TTC Naturally Enriched Cleanser and lather a slight cleanse to remove all particles of scrub.
11. Blot skin with tissue, then use a clean, dry small powder brush to brush down the face to remove all traces of scrub from the skin; ensure that all particles have been removed.
12. Cover any area of skin you do not wish to 'peel' with pad using a barrier. Taking 1 Smart Peel Pad, wipe gently in a methodical sequence over the entire face. Turn pad over and use the other side to wipe down the neck and décolleté. (be aware the pad had an exfoliation effect due to the imprinted pattern, so do not use force. Pay attention to blocked areas of congestion, for top lip, ask client to breath out before application).
13. Blot dry skin, do not remove peel solution.

#### TREAT & CORRECT - ESSENTIAL STEP 2

1. Using 2-3 pumps of DNA Recovery serum, apply to the face and neck and perform a light 5-minute massage until fully absorbed, paying attention to use lymphatic movements, cupping and tapotement, not a deep massage, but relaxing and firming.

#### CHOOSE MASQUE: either Hydrofill OR TTC Natural Enzyme Peel & Masque – depending on clients needs.

1. Take a walnut-sized amount of chosen masque in your hands and spread slowly over the face & neck and leave on for 5-7 minutes.  
IF YOU PREFER YOU CAN REMOVE FINAL SET OF VINYL GLOVES AND PERFORM REST OF PROCEDURE WITH NO GLOVES.
2. Cover eyes with cotton rounds and an eye pillow.
3. Apply warmed Hand and Body Replenisher to shoulders, arms and hands and then carry out a relaxing shoulder massage that continues smoothly down the arms and finishes on the hands.
4. Returning to the face: remove the remainder Of the masque, with warm (not hot!) mitts and blot dry skin with a tissue. (Not a hot towel so not to aggravate the skin)

#### FINISH & PROTECT - ESSENTIAL STEP 3

- Finish by applying:
  - 1 pump of LCA Eye Serum OR TTC Tightening Eye Serum around eyes -piano finger movements
  - 1 pump of Barrier Restore Complexe OR DNA Intense Recovery Creme OR Skin Restore Creme OR Luxuriant Creme, over entire area
  - 2 pumps of TETRA fx251 to entire area
  - Minerals to entire area
- Conclude treatment by completing a Skincare Recommendation Chart for client and review Post-Peel Instructions.
- Offer the client a glass of water or herbal tea.

#### RETAIL

- Chosen Facial Cleanser
- Chosen Corrector Serum/Treatment
- Chosen Hydrator
- Chosen Eye Product
- TETRA fx251
- DNA fx221 Recovery Serum
- Minerals & Brushes



#### NOTES:

## PRIORI FACIAL PROTOCOL – Step-By-Step

### “SKIN RE-BOOT” – 30 MINUTES

**Description:** Sometimes we all need a “Re-Boot” - yet time is precious. This adaptive facial procedure is designed to do just that - re-boot your skin. Your skin specialist will customize this treatment to your individual needs, leaving your skin brighter, more plump, restored and hydrated – results you can see and feel!

#### SUPPLIES NEEDED

- Large cotton pads and/or gauze pads
- Small cotton rounds for eye cover
- Tissues
- Headband
- Small dish/dauber dish
- Digital timer
- Cotton swabs/glycolic applicators
- Disposable face masque brush
- Hand sterilizing gel
- Bowl of cool, clean water
- Vinyl (not latex) close fitting gloves
- Eye Pillow

#### TREATMENT STEP-BY-STEP

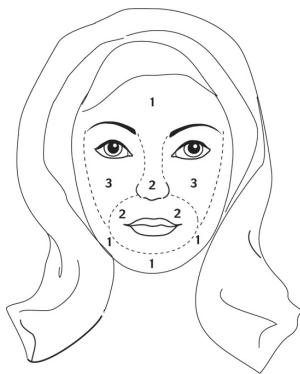
- **ESSENTIAL PRIOR TO EACH TREATMENT:** Complete PRIORI Skin Analysis & Consent Form with client and obtain client signature.
- **REVIEW** Pre-Peel Instructions with client.
- **PRODUCTS NEEDED:** Chosen Cleanser, PRE Peel Gel, Multi-Layer Peel Gel OR Superceutical Peel Gel, Hydrofill Masque, Hand and Body Replenisher, DNA Recovery Serum, Barrier Restore Complex, DNA Intense Recovery Creme, LCA Eye Serum, TETRA Sunscreen and Minerals.
- NOTE:** Do not use hot water, hot towels or steam during cleansing procedure or removal of peel product.
- **SECURE** client headband in place and sterilize your hands prior to starting the cleanse.
- **PLACE** 2 pairs of close fitting vinyl gloves onto your hands.

#### CLEAN & PREP – ESSENTIAL STEP 1

1. Mix 2 pumps of chosen PRIORI facial cleanser with small amount of water in hands.
2. Gently and thoroughly cleanse the face, neck & décolleté.
3. Remove carefully with dampened pads/cotton; blot skin dry.
4. Color match Minerals.
5. Repeat cleanse to remove all traces of make up.
6. Blot dry with tissue.

#### TREAT & CORRECT - ESSENTIAL STEP 2

1. Ask client to keep eyes closed throughout the entire procedure.
2. **OPTIONAL for advanced protocols.** If clients 1st QSOD Peel, do not use Pre Peel Gel only perform double cleanse to monitor client's skin reaction. PRE Peel Gel using a cotton or gauze pad. Wipe lightly and evenly over entire application area, in a methodical sequence.
3. Blot skin with tissue.
4. Apply barrier gel/vaseline to outer corners of eye crease, lips and base of nose and any other areas that should not be exposed to the peel.
5. Apply cotton rounds for eye protection. Cut rounds into half-moon shapes so that the lid is covered but area underneath is exposed.
6. Place 2-3 pumps of chosen Peel Gel into a small dish.
7. Set timer for 3 minutes **MAXIMUM; time may be reduced if needed.**
8. Start timer. Apply Peel Gel: Use disposable masque brush to apply peel in thin layer in sequence shown in diagram. Once even, use glycolic applicators in a counterclockwise motion over the layer of peel, check with client for areas of sensation.
9. If the neck is to be peeled, it may be performed **after the facial application is removed and charge accordingly.**



**IMPORTANT:** Development of localized redness (“hot spots”) is a sign of uneven peel penetration. Check for erythema (redness). If erythema develops, remove peel gel immediately by cleansing the area.

#### TOTAL MAXIMUM RECOMMENDED EXPOSURE TIME FOR PEEL GEL IS 3 MINUTES.

10. Remove Peel Gel: After 3 minute time limit, thoroughly remove any remaining gel with plenty of moistened cotton or gauze pads following the same sequence used to apply the Peel Gel. Repeat as necessary until all of the peel gel has been removed. Never use the same pads more than once; wipe then throw away, to ensure that all of the peel gel is removed. **Do not use sponges either as the holes collect peel within them.**

REMOVE TOP PAIR OF VINYL GLOVES.

11. Cleanse skin with appropriate facial cleanser; remove carefully and gently with water. Blot skin with tissue.

REMOVE FINAL PAIR OF VINYL GLOVES.

12. Take a walnut-sized amount of Hydrofill Masque and spread slowly over the face & neck, leave on the skin for 10 minutes. Let client know the masque may tingle for a moment, due to the high water content following a peel. Cover eyes with cotton rounds and an eye pillow.
13. During the masque stage, perform a scalp massage (optional) then a massage of the shoulders using a warmed small amount of Hand and Body Replenisher. Follow with a massage of the hands with a warmed small amount of Hand and Body Replenisher.
15. Remove any remainder Hydrofill Masque from the surface of the skin with a lukewarm mitt or face towel and blot dry skin with a tissue. (Not a hot towel so not to aggravate the post-peel effect).

#### FINISH & PROTECT - ESSENTIAL STEP 3

- Finish by applying:
  - 2 pumps of DNA Recovery Serum over entire area
  - 1 pump of LCA Eye Serum - if required around eyes - piano finger movements
  - 1 pump of Barrier Restore Complex OR DNA Recovery Creme over entire area
  - 2 pumps of TETRA fx251 to entire area
  - Minerals to entire area
- Conclude treatment by completing a Skincare Recommendation Chart for client and review Post-Peel Instructions.
- Offer the client a glass of water or herbal tea.

#### RETAIL

- Chosen Facial Cleanser
- Chosen Corrector Serum/Treatment
- Chosen Hydrator
- Chosen Eye Product
- TETRA fx251
- DNA fx221 Recovery Serum
- Minerals & Brushes
- Hydrofill Masque
- Hand & Body Replenisher



#### NOTES:

## PRIORI FACIAL PROTOCOL – Step-By-Step

### “SKIN UNWRAPPED” – 45 Minutes (Advanced Peel Clients)

**Description:** *Unwrap your skin’s true potential. If you are an advanced peel client you will love the benefits you see with this facial treatment. We will adapt and decode your skins needs, regardless of your skin concerns - this will be the ultimate skin prescription. Using advanced peeling techniques for ultimate skin resurfacing. Plump, hydrate, retexturize and illuminate your way to advanced skin results.*

#### SUPPLIES NEEDED

- Large cotton pads
- Disposable face masque brush and/orgauze pads
- Small cotton rounds
- Tissues
- Headband
- Digital timer
- Cotton swabs/ glycolic applicators
- Hand sterilizing gel
- Disposable face masque brush
- Small dish/dauber dish
- Bowl of cool, clean water
- 2 Pair of toweling mitts or face towel
- Vinyl (not latex) close fitting gloves
- Eye Pillow
- Clean, Dry powder brush for after scrub

#### TREATMENT STEP-BY-STEP

- **ESSENTIAL PRIOR TO EACH TREATMENT:** Complete PRIORI Skin Analysis & Consent Form with client and obtain client signature.
- **REVIEW** Pre-Peel Instructions with client.
- **PRODUCTS NEEDED:** Chosen Cleanser, Active Cleanser, 2xfoliant Peel+Scrub, PRE Peel Gel, Multi-Layer Peel Gel OR Superceutical Peel Gel, Hydrofill Masque, Hand and Body Replenisher, DNA Recovery Serum, Barrier Restore Complexe, DNA Intense Recovery Creme, LCA Eye Serum. TETRA Sunscreen and Minerals.
- NOTE:** *Do not use hot water, hot towels or steam during cleansing procedure or removal of peel product.*
- **ASSIST** client onto treatment bed, adjusting bolsters and bed warmer for client comfort.
- **SECURE** client headband in place and sterilize your hands prior to starting the cleanse.
- **PLACE** 2 pairs of close fitting vinyl gloves onto your hands.

#### CLEAN & PREP – ESSENTIAL STEP 1

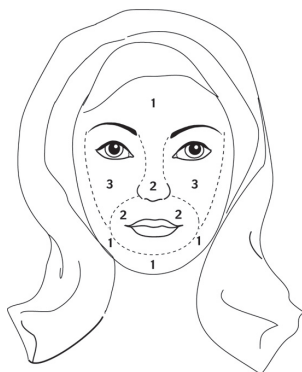
1. Mix 2 pumps of chosen PRIORI facial cleanser with small amount of water in hands.
2. Gently and thoroughly cleanse the face, neck & décolleté.
3. Remove carefully with dampened pads/cotton; blot skin dry.
4. Color match Minerals.
5. Repeat cleanse to remove all traces of make up.
6. Blot dry with tissue.

USE THE MAGNIFYING LAMP TO ANALYZE CLIENT’S SKIN.

7. Mix 1 teaspoon of 2xfoliant Peel+Scrub with 1 pump of Active Cleanser and a drop of water together in a small bowl. Apply the mixture gently to the face, neck and décolleté, using a circular motion for approximately 30 seconds (no steam).
8. Gently remove the scrub with lukewarm (not hot) mitts to ensure that all product is removed. Blot skin with tissue, then use a clean, dry small powder brush to brush down the face to remove all traces of scrub from the skin; ensure that all particles have been removed.

#### TREAT & CORRECT - ESSENTIAL STEP 2

9. Ask client to keep eyes closed throughout the entire procedure.
10. Prep skin with PRE Peel Gel using a cotton or gauze pad. Wipe lightly and evenly over entire application area, in a methodical sequence.
11. Blot skin with tissue.
12. Apply barrier gel/vaseline to outer corners of eye crease, lips and base of nose and any other areas that should not be exposed to the peel.
13. Apply cotton rounds for eye protection. Cut rounds into half-moon shapes so that the lid is covered but area underneath is exposed.
14. Place 2-3 pumps of chosen Peel Gel into a small dish.
15. Set timer for 3 minutes **MAXIMUM**; *time may be reduced if needed.*
16. Start timer. Apply Peel Gel: Use disposable masque brush to apply peel in thin layer in sequence shown in diagram. Once even, use glycolic applicators in a counterclockwise motion over the layer of peel, check with client for areas of sensation.
17. *If the neck is to be peeled, it may be performed after the facial application is removed and charge accordingly.*



**IMPORTANT:** Development of localized redness (“hot spots”) is a sign of uneven peel penetration. Check for erythema (redness). If erythema develops, remove peel gel immediately by cleansing the area.

**TOTAL MAXIMUM RECOMMENDED EXPOSURE TIME FOR PEEL GEL IS 3 MINUTES.**

18. Remove Peel Gel: After 3 minute time limit, thoroughly remove any remaining gel with plenty of moistened cotton or gauze pads following the same sequence used to apply the Peel Gel. Repeat as necessary until all of the

peel gel has been removed. Never use the same pads more than once; wipe then throw away, to ensure that all of the peel gel is removed.

**Do not use sponges either as the holes collect peel within them.**

REMOVE TOP PAIR OF VINYL GLOVES.

19. Cleanse skin with appropriate facial cleanser; remove carefully and gently with water. Blot skin with tissue.

REMOVE FINAL PAIR OF VINYL GLOVES.

20. Take a walnut-sized amount of Hydrofill Masque plus 2 pumps of DNA fx221 Recovery Serum blend them together in your hands and spread slowly over the face & neck and leave on for 10 minutes. Let client know the masque may tingle for a moment, due to the high water content following a peel. Cover eyes with cotton rounds and an eye pillow.
21. During the masque stage, perform a scalp massage (optional) then a massage of the shoulders using a warmed small amount of Hand and Body Replenisher.

FOLLOW WITH A MASSAGE OF THE HANDS WITH A WARMED SMALL AMOUNT OF HAND AND BODY REPLENISHER.

22. Remove any remainder Hydrofill Masque from the surface of the skin with a lukewarm mitt or face towel and blot dry skin with a tissue. (Not a hot towel so not to aggravate the post-peel effect).

#### FINISH & PROTECT - ESSENTIAL STEP 3

Finish by applying:

- 2 pumps of DNA Recovery Serum over entire area
- 1 pump of LCA Eye Serum - if required - around eyes – piano finger movements
- 1 pump of Barrier Restore Complexe OR DNA Recovery Creme over entire area
- 2 pumps of TETRA fx251 to entire area
- Minerals to entire area
- Conclude treatment by completing a Skincare Recommendation Chart for client and review Post-Peel Instructions.
- Offer the client a glass of water or herbal tea.

#### RETAIL

- Chosen Facial Cleanser
- Chosen Corrector Serum/Treatment
- Chosen Hydrator
- Chosen Eye Product
- TETRA fx251
- DNA fx221 Recovery Serum
- Minerals & Brushes
- Hydrofill Masque
- Hand & Body Replenisher



**NOTES:**

## PRIORI FACIAL PROTOCOL – Step-By-Step

### (NO PEEL FACIAL) “UNCOVER. EXPOSE. RENEW.” – 60 Minutes

**Description:** A treatment with the wow factor that provides dramatic and visible results while achieving skin rejuvenation with improved elasticity, texture, tone and clarity. Relax and lose yourself in a wealth of massage plus unique innovative skincare results! Includes a hand and arm peel treatment – you will awake feeling de-stressed, restored with youthful-looking skin. The ultimate indulgence. Your skin. Uncovered.

#### SUPPLIES NEEDED

- Small bowl
- 3 pairs of Mitts
- Plastic liner for hand wrap
- Bolster cushion
- Large cotton pads
- Eye pillow
- Headband
- Facial tissues
- Vinyl gloves
- Barrier gel for non-peel areas
- Perfecting Minerals brushes

#### TREATMENT STEP-BY-STEP

- **ESSENTIAL PRIOR TO EACH TREATMENT:** Complete PRIORI Skin Analysis & Consent Form with client and obtain client signature.
- **REVIEW** Pre-Peel Instructions with client.
- **PRODUCTS NEEDED:** Chosen Cleanser, Active Cleanser, 2xfoliant Peel+Scrub, PRE Peel Gel, Multi-Layer Peel Gel OR Superceutical Peel Gel, Hydrofill Masque, Hand and Body Replenisher, chosen Corrector, DNA Fx 221 Recovery Serum Hydrator and Eye Product. TETRA Sunscreen and Minerals.
- **ASSIST** client onto warmed treatment bed, for client comfort. Ensure client is deeply relaxed and that the body is fully aligned by using bolster cushions under the knees and a flat pillow under the pelvis.
- **SECURE** client headband in place and sterilize your hands prior to starting the cleanse.
- **PLACE** relaxing eye pillow onto client's eyes.
- **PREPARE** hand towel and plastic under each hand and arm.
- **CLEANSE** client's hands and forearms in tandem with 2 pumps of Active Cleanser and remove with warm mitts from towel warmer.
- **MASSAGE** Hand and Body Replenisher to hands and forearms and massage simultaneously.
- **WRAP** hands and arms in plastic liner, followed by towels or warm mitts.

#### CLEAN & PREP – ESSENTIAL STEP 1

- Remove eye pillow.
- Perform Eye Make-Up Removal if needed.
- Cleanse face, neck and décolleté with 2 pumps of Active Cleanser; remove with large dampened cotton pads; dry skin with tissue.
- Color match Perfecting Minerals.
- Apply barrier gel to lips to act as a barrier for the next cleanse step.
- Cleanse again with 2 pumps of Active Cleanser to remove all traces of makeup, leaving the cleanser on face and neck for 3 minutes; perform **PRIORI WELLNESS MASSAGE** for 2-3 minutes to induce deeper relaxation. Wellness massage is a short procedure – 2-3 minutes.
- Sterilize your hands, then return to face procedure.
- Remove Active Cleanser carefully with dampened pads/cotton; blot skin dry with tissue.

Cover eyes with cotton pads cut into ½ moons. Do not to cover upper cheek area to protect eyes from the bright light of the magnifying lamp. Perform full skin analysis using a magnifying lamp.

#### TREAT & CORRECT - ESSENTIAL STEP 2

- Mix 1 teaspoon of 2xfoliant Peel+Scrub with 1 pump of Active Cleanser and a drop of water together in a small bowl. Apply the mixture gently to the face, neck and décolleté, using a very light circular motion for approximately 30 seconds
- Keeping the eye pads in place, gently steam the skin gently for 2 minutes maximum (optional step).
- Gently remove the scrub with warm (not hot) mitts to ensure that all product is removed. Blot skin with tissue, then use a clean, dry small powder brush to brush down the face to remove all traces of scrub from the skin; ensure that all particles have been removed.
- Perform extraction if needed.
- **IF YOU PERFORM EXTRACTION**, wipe over the skin with PRE Peel Gel on a dry cotton pad to any area extracted. This may tingle the clients skin.
- Using warmed Hydrofill Masque, perform the **RELAX & FIRM MASSAGE** for 10 minutes on neck and face only.
- Take a walnut-sized amount of Hydrofill Masque plus 2 pumps of DNA fx221 Recovery Serum blend them together in your hands and spread slowly over the face & neck and leave on for 10 minutes. Cover eyes with cotton rounds and an eye pillow.
- For 3-4 mins, perform a relaxing **Scalp Massage**.
- During the remaining masque treatment time, return to hands uncover from the wrapped towels and cleanse both hands simultaneously with 2 pumps of Active Cleanser; remove with damp mitts and blot dry with towel.

#### OPTIONAL STEP:

- Put on a pair of vinyl gloves to your hands and set timer for 3 minutes.

- Apply 3 pumps of Superceutical Peel Gel into your palms with vinyl gloves on, spread quickly and apply to both your clients hands and forearms – (not their palms) in tandem. Remove your vinyl gloves and discard.
- Perform a relaxing shoulder massage with warmed Hand and Body Replenisher for the remainder of the 3 minutes.
- When timer goes off, remove Superceutical Peel Gel with 2 pumps of Active Cleanser and a pair of dampened mitts; blot skin dry with towel.
- Apply a small amount of Hand and Body Replenisher to the hands and arms.
- Remove any remainder Hydrofill Masque from the surface of the skin with a pair of warm mitts or a face towel and blot dry skin with a tissue.

#### FINISH & PROTECT - ESSENTIAL STEP 3

Finish by applying:

- 2 pumps of DNA Recovery Serum over entire area
- 1 pump of chosen eye product around eyes – piano finger movements
- 1 pump of Barrier Restore Complexe OR DNA Recovery Creme over entire area
- 2 pumps of TETRA fx251 to entire area
- Minerals to entire area
- Conclude treatment by completing a Skincare Recommendation Chart for client and review Post-Peel Instructions.
- Offer the client a glass of water or herbal tea.

#### RETAIL

- Chosen Facial Cleanser
- 2xfoliant Peel+Scrub
- Chosen Corrector Serum/Treatment
- Chosen Hydrator
- Chosen Eye Product
- TETRA fx251
- DNA fx221 Recovery Serum
- Minerals & Brushes
- Hydrofill Masque
- Hand & Body Replenisher



#### NOTES:

## PRIORI FACIAL PROTOCOL – Step-By-Step

### TTC

### Naturally Clean + Illuminated – 30 Minutes

Revitalize and brighten a tired, dull or sallow complexion with potent pumpkin and papaya enzymes. This nourishing enzyme “beauty flash” peel will dissolve dead skin cells to reveal a healthier, illuminated complexion. Your skin will pop! It will feel smoother, appear more even in tone with a beautiful, dewy glow. This treatment may also be performed intensively once or twice per week for 3 weeks: a 6-treatment course gives optimal results.

#### SUPPLIES NEEDED

- Large cotton pads and/or gauze pads
- Small cotton rounds for eye cover
- Tissues
- Headband
- Small dish/dauber dish
- Digital timer
- Disposable face masque brush
- Hand sterilizing gel
- Bowl of cool, clean water
- Vinyl (not latex) close fitting gloves

#### PRODUCTS NEEDED

- Naturally Enriched Cleanser
- Natural Enzyme Peel & Masque – approx. 2 teaspoons (11ml)
- Tightening Eye Serum
- Skin Restore Creme -1 Pump or 2 pumps of Illumination Treatment if pigmentation
- Luxuriant Creme (for Hand Massage during masque) – 4 pumps (2 per hand)
- Sunscreen – TETRA
- Minerals & Uber Finishing

### TREATMENT STEP-BY-STEP

#### ESSENTIAL PRIOR TO EACH TREATMENT:

Complete PRIORI Skin Analysis & Consent Form with client and obtain client signature.

NOTE: Do not use hot water, hot towels or steam during enzyme procedure or removal of peel product.

- SECURE client headband in place and sterilize your hands prior to starting the cleanse.
- PLACE 2 pairs of close fitting vinyl gloves onto your hands, or 1 pair if you wish to complete treatment with bare hands. Regulations permitted.

#### CLEAN & PREP – ESSENTIAL STEP 1

1. Mix 2 pumps of Naturally Enriched Cleanser with small amount of water in hands.
2. Gently and thoroughly cleanse the face & neck.
3. Remove carefully with dampened pads/cotton; blot skin dry.
4. Color match Minerals.
5. Repeat cleanse to remove all traces of make up.
6. Blot dry with tissue.

#### TREAT & CORRECT - ESSENTIAL STEP 2

Ask client to keep eyes closed throughout the entire procedure.

##### Enzyme Stage:

- Apply protective eye pads.
- Dispense Natural Enzyme Peel & Masque into a small bowl.
- Start timer; apply a thick layer of the Natural Enzyme Peel & Masque with disposable masque brush over the face, neck and décolletage. Do not apply too close to the eyes or mouth. Do not massage into the skin.
- For sensitive or reactive skin apply for 2 minutes for 1st treatment to assess skin microcirculation response. Normal skins start at 5 minutes for 1st treatment. When satisfied with treatment reactions, build up to 10 minutes max. Remind client they may remain pink/red for up to 45 minutes post treatment.

**NOTE:** If the skin absorbs the Natural Enzyme Peel & Masque — you may reapply the Natural Enzyme Peel & Masque so that the area you want to treat is constantly covered in a thick layer.

**NOTE:** Check for redness/erythema. You will expect to see a pink skin, if it becomes excessive or too warm and tingly for client, remove from skin immediately.

#### OPTIONAL STAGE: DEPENDING ON THE CLINIC

During the development time, perform a hand massage using 4 pumps of Luxuriant Creme (2 per hand).

- When the timer is finished, remove Natural Enzyme Peel & Masque in the same order it was applied.
  - Remove the Natural Enzyme Peel & Masque 3 times with dampened gauze pads/cotton using clean gauze pads/cottons for each removal.
- REMOVE TOP PAIR OF GLOVES
- Extract if applicable NO STEAM
  - Perform a final cleanse with 1 pump of Naturally Enriched Cleanser and blot skin dry thoroughly.
  - OPTIONAL STEP: If skin is very red and feels very warm, you may apply some cool compresses to the skin for 60 seconds after the removal, to aid the vasoconstriction reaction.

#### FINISH & PROTECT - ESSENTIAL STEP 3

Finish by applying:

- 2 pumps of DNA Recovery Serum over entire area (if applicable to clinic product line-up)
- 1 pump of Tightening Eye Serum – tap in with piano finger movement.
- TETRA Sunscreen (if applicable to clinic product line-up)
- Minerals to entire area and Uber Finishing

- Conclude treatment by completing a Skincare Recommendation Chart for client and review home Instructions.
- Offer the client a glass of water or herbal tea.

- Remind your client that the skin may go red due to microcirculation and remain for up to 45 minutes post-treatment. This is a normal reaction but may feel slightly warm.

#### RETAIL

- Naturally Enriched Cleanser
- Illumination Treatment
- Skin Restore Creme
- Luxuriant Creme
- Tightening Eye Serum
- Natural Enzyme Peel & Masque (retail strength)
- DNA fx221 Recovery Serum (if salon carries full line)
- TETRA (if salon carries full line)
- Minerals & Brushes



#### NOTES:

## PRIORI FACIAL PROTOCOL – Step-By-Step

### TTC Restore, Awaken and Nurture – 60 Minutes

For a cocoon of nature with results that leave you wonderfully illuminated. This fabulous skin nourishing treatment will adapt to your skin's needs and work to restore your complexion by improving your skin's health. Enzymes will brighten and deeply exfoliate, you will have a wealth of massage and 2 treatment masques to succumb you into a blissed state, and awaken with skin ready for the red carpet. *(Either perform this facial only after an initial "Naturally Clean + Illuminated" 30 minute facial has been performed to ensure enzyme peel is well tolerated, OR do not perform the face scrub in this treatment if this is a 1st time client). Facial is designed for spa's that have a full PRIORI line-up of products – LCA & DNA.*

#### SUPPLIES NEEDED

- Large cotton pads and/or gauze pads
- Small cotton rounds for eye cover
- Tissues
- Headband
- Digital timer
- Eye pillow
- Disposable face masque brush x 2
- Warm towels or mitts -2 sets
- Hand sterilizing gel
- Bowl of cool, clean water
- Vinyl (not latex) close fitting gloves
- Small dish/dauber dish x 2

#### PRODUCTS NEEDED

- Naturally Enriched Cleanser
- Natural Enzyme Peel & Masque—approx. 2 tsps. (11ml)
- Tightening Eye Serum
- Skin Restore Creme or Illumination Treatment if pigmentation
- Luxuriant Creme
- 2xfoliant Peel+Scrub
- Hydrofill Masque
- DNA fx221 Recovery Serum
- Hand and Body Replenisher
- Sunscreen – TETRA
- Minerals & Uber Finishing

### TREATMENT STEP-BY-STEP

#### ESSENTIAL PRIOR TO EACH TREATMENT:

Complete PRIORI Skin Analysis & Consent Form with client and obtain client signature.

NOTE: Do not use hot water, hot towels or steam during enzyme procedure or removal of peel product.

- SECURE client headband in place and sterilize your hands prior to starting the cleanse.
- PLACE 2 pairs of close fitting vinyl gloves onto your hands, or 1 pair if you wish to complete treatment with bare hands. Regulations permitted.

#### CLEAN & PREP – ESSENTIAL STEP 1

1. Mix 2 pumps of Naturally Enriched Cleanser with small amount of water in hands.
2. Gently and thoroughly cleanse the face & neck.

3. Remove carefully with dampened pads/cotton; blot skin dry.
4. Color match Minerals.
5. Repeat cleanse to remove all traces of make up.
6. Blot dry with tissue.

#### TREAT & CORRECT - ESSENTIAL STEP 2

##### USE THE MAGNIFYING LAMP TO ANALYZE CLIENT'S SKIN.

- Mix 1 teaspoon of 2xfoliant Peel+Scrub with 1 pump of Cleanser and a drop of water together in a small bowl. Apply the mixture gently to the face, neck and décollette using a FEATHER-LIGHT circular motion for approximately 20 seconds (no steam)
- Gently remove the scrub with lukewarm (not hot) mitts to ensure that all product is removed. Blot skin with tissue, then use a clean, dry small powder brush to brush down the face to remove all traces of scrub from the skin; ensure that all particles have been removed.

Ask client to keep eyes closed throughout the entire procedure.

##### Enzyme Stage:

- Apply protective eye pads.
- Dispense Natural Enzyme Peel & Masque into a small bowl.
- Start timer; apply a thick layer of the Natural Enzyme Peel & Masque with applicator over the face, neck and décolletage. Do not apply too close to the eyes or mouth. Do not massage into the skin.
- For sensitive or reactive skin apply for 2 minutes for 1st treatment to assess skin microcirculation response. Normal skins start at 5 minutes for 1st treatment. When satisfied with treatment reactions, build up to 10 minutes max. Remind client they may remain pink/red for up to 45 minutes post treatment.

**NOTE:** If the skin absorbs the Natural Enzyme Peel & Masque — you may reapply the Natural Enzyme Peel & Masque so that the area you want to treat is constantly covered in a thick layer.

**NOTE:** Check for redness/erythema. You will expect to see a pink skin, if it becomes excessive or too warm and tingly for client, remove from skin immediately.

- During the 10 minutes development time, perform a hand cleanse, remove with mitts in tandem and apply a small amount of Natural Enzyme Peel & Masque to the back of hands for the remainder of the face treatment time. Leave on to develop.
- When the timer is finished, remove Natural Enzyme Peel & Masque from face in the same order it was applied.

- Remove the Natural Enzyme Peel & Masque off the face 3 times with dampened gauze pads/cotton using clean gauze pads/cottons for each removal.

REMOVE TOP LAYER OF GLOVES.

- Extract if applicable NO STEAM.

- Perform a final cleanse with 1 pump of Naturally Enriched Cleanser and blot skin dry thoroughly.

- OPTIONAL STEP: If skin is very red and feels very warm, you may apply some cool compresses to the skin for 60 seconds after the removal, to aid the vasoconstriction reaction.

- Place eye pillow onto eyes for a moment while you remove the enzyme peel from the hands and dry the hands.
- Return to the face and remove eye pillow with confident contact.

#### FACE & NECK MASSAGE:

- Using warmed Hydrofill Masque, perform the RELAX & FIRM MASSAGE for 10 minutes on neck and face only.

#### 2ND MASQUE, SCALP, SHOULDERS & HAND MASSAGE:

- Take a walnut-sized amount of Hydrofill Masque plus 2 pumps of DNA fx221 Recovery Serum blend them together in your hands and spread slowly over the face & neck and leave on for 10 minutes. Let client know the masque may tingle for a moment, due to the high water content following enzyme peel.
- Cover eyes with cotton rounds and an eye pillow.
- During the 10 minute masque stage, perform your massages; starting with a scalp massage.
- After the scalp, apply warmed Hand and Body Replenisher to shoulders, arms and hands and then carry out a relaxing shoulder massage that continues smoothly down the arms and finishes on the hands.
- Returning to the face: massage lightly into the skin the remainder Hydrofill Masque, then perform a light cleanse with 1 pump of cleanser, remove with warm towel and blot dry skin with a tissue. (Not a hot towel so not to aggravate the skin)

#### FINISH & PROTECT - ESSENTIAL STEP 3

- Finish by applying:
  - 2 pumps of DNA Recovery Serum over entire area.
  - 1 pump of Tightening Eye Serum – tap in with piano finger movement, not massage.
  - TETRA Sunscreen.
  - Minerals to entire area and Uber Finishing.
- Conclude treatment by completing a Skincare Recommendation Chart for client and review home Instructions.
- Offer the client a glass of water or herbal tea.
- Remind your client that the skin may go red due to microcirculation and remain for up to 45 minutes post-treatment. This is a normal reaction but may feel slightly warm.

#### RETAIL

- Naturally Enriched Cleanser
- Illumination Treatment
- Skin Restore Creme
- Luxuriant Creme
- Tightening Eye Serum
- Natural Enzyme Peel & Masque (retail strength)
- DNA fx221 Recovery Serum & TETRA (if salon carries full line)
- Minerals & Brushes
- Hand & Body Replenisher



#### NOTES:



---

## PRIORI SIGNATURE MASSAGE STEPS (CHEAT STEPS)

---

### SCALP MASSAGE – STEP BY STEP

---

Ensure your client is deeply relaxed and the body is fully aligned by using bolster cushions under the knees and a flat pillow under the pelvis.

Opening massage is just few minutes at the beginning to induce deeper relaxation and includes Yoga Scalp Massage, approx 2-3 minutes long.

1. Slow, deep breaths, 3 times
2. Occipital
3. Ears
4. Knead body
5. Ankle stretches
6. Finish with repeat of step 1

### RELAX & FIRM MASSAGE – STEP BY STEP

---

1. Full shoulder and neck massage
2. Long, deep sweeps up neck, cheeks and forehead (think 'upwards & lifting', deep movements)
3. Outer nostrils 6 times
5. Cheeks 6 times
6. Pump & slide eyebrows 6 times
7. Sweep outer corner eye to hairline 6 times
8. Knuckles horizontal (bye, bye botox)
9. Knuckles in botox point (between brows)
10. Deep botox vertical lift: index finger deep stretch to hairline 3 times
11. Palms to eyes; sweep cheeks 3 times
12. Breathe and turn: pull upward from lips and downwards to shoulder (lift stretch) 2 times
13. Repeat other side
14. Centre head and up to ears
15. Middle ears – pull 4 times
16. Lower ears – pull 4 times
17. Upper ears – pull 4 times
18. Glide off through hair

### SCALP MASSAGE – STEP BY STEP

---

1. Sternum
2. Axilla
3. Clavicle
4. Occipit
5. Rotate palms – scalp
6. Turn and shampoo



**NOTES:**

---

## FULL STEP-BY-STEP MASSAGE INSTRUCTIONS

---

### SCALP MASSAGE – STEP BY STEP

---

1. Starting with hands on top of each other apply gentle pressure at sternum (relieves nervousness and anxiety).
2. Move to axillary area and apply gentle pressure just above to both sides simultaneously (relieves tension and stress).
3. Then move to just behind clavicle and apply gentle pressure (relieves emotional tension).
4. Move up to head and apply firm pressure with fingertips to occipital area holding for 3 seconds then move on up to scalp.
5. Rotate palms on head.
6. Gently grasp head and turn, with shampoo like movement work through side and crown of scalp then use fingers to comb through hair.
7. Turn head smoothly to other side and repeat above movements on other side of head.
8. Gently turn head back to center.
9. Starting with both thumbs at midline of scalp, follow hairline pressing 6 times down to helix of ears.
10. Place thumbs one at a time in starting position and repeat 2 more times.
11. Come off by gliding hands firmly from behind ears off the scalp maintaining contact then moving off through hair.
12. Move your body to the side of facial table facing the client/patient and firmly run hands with full palm contact through hair 6 times.
13. Finish by drawing hands and fingers to tips of hair slowly.

### RELAX & FIRM MASSAGE – STEP BY STEP

---

1. Start the massage using relaxing de-stress massage of the full shoulder area and neck. Use your own technique for 1-2 minutes.
  2. Use firm, deep sweeping movements up the sides of neck, avoiding the central area of the neck.
  3. Carry out the same deep firm sweeping movements upwards and following jawline, split top lip, cheeks, temples then to forehead. Overall this should all be approx 2-3 minutes.
- NOTE: Steps 2 & 3: If performing the massage on a male client be very careful, if not freshly shaven, may well be uncomfortable to receive.
4. Now carry out the following Facial moves; simple massage points to help rejuvenate and release built up facial tension.

To perform the pressure points, maintain good skin contact and rotate fingers in clockwise motion; break contact and move to next point.

- a) To fight discoloration and bags under the eyes and assist with sinus relief: Apply gentle pressure on the point outside of the outer nostrils. Gently massaging this point releases toxins from the body that can show up as blotches and bags under the eyes. Repeat 6 times.
- b) To detoxify and oxygenate the skin: Find the apple of the cheeks and press your middle finger there. Hold and release and perform a pressure point massage using clockwise motion several times on this point. Repeat 6 times.
- c) To smooth facial lines and prevent wrinkles: A great acupressure point, also helpful for alleviating certain sinus conditions, lies between the nose and the eyes. Press your index fingers or thumbs under the inner arch of the eyebrows, which, again, is helpful for sinus release.

5. Pump and slide your thumb and middle finger along the ridge above the eyebrows. Repeat 6 times. Once done, sweep your fingers around the eye lid to the next move.
6. Brow Smoother: With index fingers at outer corners of eyes, slowly pull away toward hairline. The client's eyes should be closed or closing as you gently pull away from midline. Like a natural Botox. Repeat 3 times.
7. To unwrinkle the forehead and brow: Use your knuckles to rub the temples and forehead. Start from the center of the forehead and radiate out to the temples. This massage relieves stress and headaches.
8. To free up facial tension: Place your fingers in the center of the forehead and sweep outward in horizontal lines. Repeat three times. Now lightly press your palms onto the eye sockets and lightly sweep your fingertips down the cheeks. Repeat three times.
9. To tone face muscles: Twist 2 times: Ask client to take a deep breath and on exhale turn client's head to one side keeping slight pressure with one hand then gently pull slightly up on cheek towards lips (with the hand on same side that the head is turned) -turn head back to center. Ask client to take a deep breath, on exhale turn and repeat movement on opposite side. Turning the head adds shape and definition to the neck and helps to soften fine lines on the neck. Turn head back to center and gently move up to ears.
10. To heighten skin color: Pull the middle earlobes out to the sides with your thumb and index finger four times. Hold the lower earlobes and pull down lightly four times. Then hold the upper earlobes and pull up four times. This is an ancient Indian facial yoga technique that brings circulation to the face. Come off the face and head by gently gliding fingers through hair.



### NOTES: